

# PRODUCT CATALOGUE



# REYNCHÉMIE

YOUR PARTNER IN  
CONSTRUCTION, RESTAURATION AND RENOVATION



# REYNCHEMIE

Since 1988 Reynchemie has been a successful and trendsetting enterprise with innovative products for both new constructions and products for reparation and renovation of old listed monuments. With an extensive and innovative product range, Reynchemie sets the quality standard in terms of technology, quality and service with high value for the customer.

Our products are used for facade cleaning, water-repellent protection, wood renovation, natural stone restoration and imitation ... Various paints, epoxy mortars and cleaning products are also part of our range.

## Representatives

Do you have any questions or would you like advice on our products? Our commercial team is always ready to help you. Reynchemie guarantees professional advice and a fast processing of your order.

## Website

Our website [www.reynchemie.com](http://www.reynchemie.com) contains all information about our complete product range.

Via the "contact" tab, you can find our representatives by their region.

Moreover, you can find all our distribution points on our website, both in Belgium and in the Netherlands.

## Phone

You prefer to order by phone?

You can reach us by phone on **(0032) 51/24.25.27**, every working day from 8h to 12h and 13h to 17h.

## E-mail

You can easily pass on your order by e-mail: you can contact us electronically every working day at **[reynchemie@reynchemie.com](mailto:reynchemie@reynchemie.com)**. In addition, you can always contact us by e-mail for all kinds of questions.

© Reynchemie nv/sa - 2022, edition 1



# TABLE OF CONTENTS

## **Facade cleaners 4**

Acidic	5
Alkaline	5
Cement residue remover	5
Universal cleaner	5

## **Cleaning products 6**

Interior cleaning	7
Film-forming cleaning paste	7
Specific cleaning	7
Maintenance cleaner for concrete floors	7
Cleaner/degreaser	7
Rust remover	7
Moss remover/bactericide	7
Aluminum	7

## **Water-repellents/hardeners/anti-graffiti 8**

What are water-repellents?	9
Test reports	9
Water-repellents for facades	10
In cream form	10
Solvent-based	10
Solvent-free	10
Crack bridging	11
Water-/oil-repellent	11
Anti-graffiti	11
Semi-permanent system	11
Permanent system	11
Surface hardener	11
Stone reinforcer	11

## **Rising moisture 12**

Injection products	13
Injection cream	13
Solvent-free	13
Solvent-based	13
Salt-blocking	13
Sulphates	13
Nitrates	13

## **Basement sealing 14**

Mortars	15
Salt-buffering sub-render	15
Elastic mortar	15
Hydraulic water-proof mortars	15
Waterstop	15
Fast setting cement	15
Injection foam	15
Sealing paste	15

## **Wood restoration 16**

Insecticide-fungicide, fungi	17
Epoxy for reparation	17
Fibreglass rods	17
Filler	17
Wood protection cream	17

## **Stone restoration 18**

Repair mortars	19
Mineral mortar	19
Hydraulic mortar	19
Decorative micro mortar	19
Pointing mortar	19

## **Concrete repair 20**

2-component mortars	21
Horizontal application	21
Vertical repairs	21
Casting mortar	21
Roadworks	21
MMA-mortar	21
Fiber-reinforced mortar	21
Joint filler	21
Micro mortar filler	21
Injection resin	21

## **Post-treatment of concrete floors 22**

Sodium silicate hardener	23
Lithium silicate hardener	23
Impregnation	23
Solvent-based curing compound	23
Solvent-free curing compound	23
Surface retarder	23

## **Paints and plasters 24**

Paints	25
Lime render	25
Siloxane paint	25
Lime paint	25
Silicate paint	25
Roof paint	25
Plasters	26
Ground plaster	26
Finishing plaster	26
Lime filler	26

## **Floor systems 27**

2-component epoxy coating	28
Polyurethane hardtop	28
3-component epoxy casting mortel (3 mm)	28
2-component leveling coating (1-2 mm)	28
2-component epoxy primer	28
Etching agent for concrete	28

## **Various products 29**

Strippers	30
Paints	30
Exterior paints	30
Glue	30
Concrete	30
Construction specialties	31
Chemical anchor	31
Cement- and concrete improvers	31
Pigeon protection	31
Release agent	32
Polyvalent thinner	32
Pumps and accessories	32



# FACADE CLEANERS





# FACADE CLEANERS

## Acidic

### RC HF Cleaner

Extremely suitable for cleaning brick masonry. Not suitable for lime- and/or sandstone, marble, polished natural stone and glazed stone (unless for removing the glaze). RC HF Cleaner contains hydrofluoric acid and wax-active ingredients, which have an excellent cleaning performance. (pH 1)



### RC Facade P

Ready-to-use, thixotropic facade cleaner. Dissolves surface contamination gently but extremely effectively from brick, architectural concrete and other porous, acid-resistant surfaces. (pH < 1)



## Alkaline

### RC Alkalit 502

Environmentally friendly cleaner for mineral surfaces to remove atmospheric contaminations. Not aggressive to the surface, the environment and the user. Does not affect the surface, so that the original patina color is preserved. (pH 8)



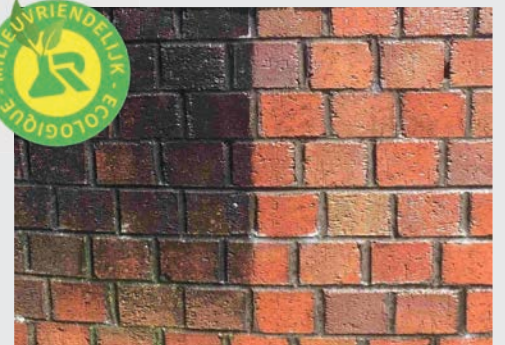
### RC Alkali-Clean

Liquid and alkaline cleaner for almost all exterior surfaces and virtually all types of soiling. The fixation in the capillaries ensures powerful cleaning of foreign material. (pH 7,5)



### RC Brick-Clean

Thixotropic facade cleaner based on ammonium bifluoride. Suitable for use on most mineral substrates. Has a very fast and active action and is biodegradable. (pH 6)



## Cement residue remover

### RC Cement Clean 2

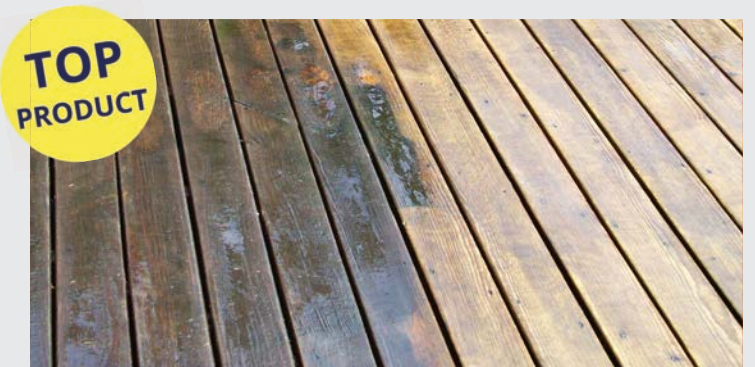
RC Cement Clean 2, with its unique formula without hydrochloric or phosphoric acid, has been specially developed for the removal of efflorescence and cement residue on all types of masonry without causing damage to the substrate.



## Universal cleaner

### RC OS 2

Universal cleaning product for intensive cleaning of all types of exterior surfaces. It removes all dirt and deposits of atmospheric origin. The product starts working immediately after application.





# CLEANING PRODUCTS





# INTERIOR CLEANING

## Film-forming cleaning paste

### RC Xetal Clean

Film-forming cleaning paste to remove soot, dirt, dust and nicotine from interior walls. It forms an easily peelable film when dried up. When peeling off, the contamination is removed mechanically. RC Xetal Clean is extremely suitable for cleanup after a fire.

Scan for more information, images and test report:



TOP  
PRODUCT



## SPECIFIC CLEANING

### Maintenance cleaner for concrete floor

#### RC Concrete Clean+

Cleaning and maintenance product specifically designed for hardened and polished concrete floors. With each cleaning session, the maintenance and quality of the concrete improves.



### Cleaner/degreaser

#### RC 14

Concentrated, almost odorless cleaning agent. Alkaline and non-flammable. RC 14 is used to remove greases, oils and dirt. Can also be used to remove tire marks.



### Rust remover

#### RC Rust Remover

Easily and safely removes rust and other oxidation stains from all ceramic tiles, concrete, marble, roof tiles, metal and wood. After treatment, these surfaces look like new again.



### Moss remover/bactericide

#### RC Kilgreen

Powerful cleaner for the removal of mosses, lichens, algae and fungi on all exterior surfaces. Self-cleaning and lasting effect deep into the pores, so the moss infestation is fought for a longer period of time.

**Belgian approval number 7214B.**



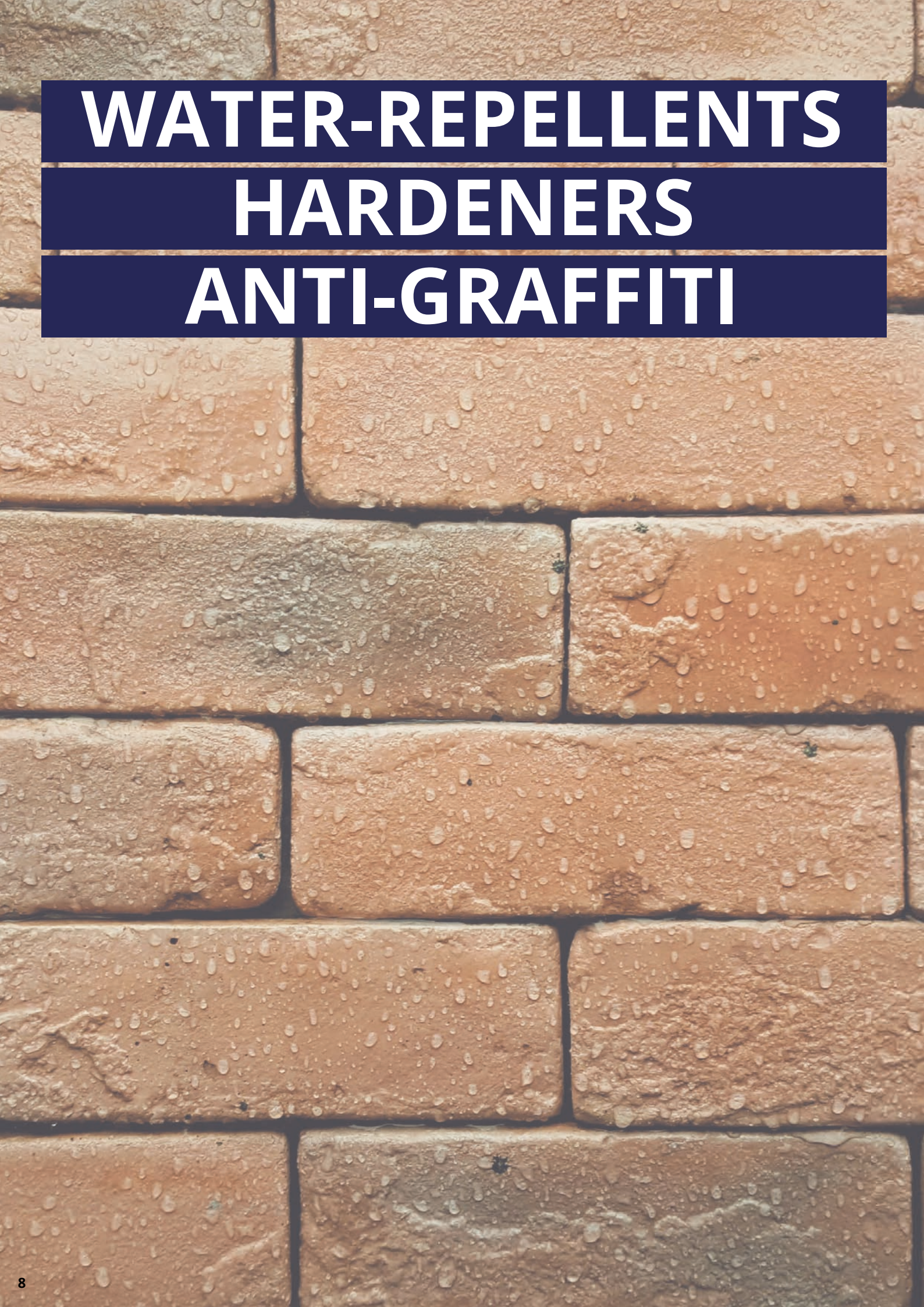
### Aluminium

#### RC Alu Clean

Aluminum cleaner that removes grease, dirt and oxidation.







# **WATER-REPELLENTS HARDENERS ANTI-GRAFFITI**



# WHAT ARE WATER-REPELLENTS?

A hydrofuge or water-repellent makes a **facade water-repellent** without changing the water vapor diffusion resistance. Our water-repellents, liquid or cream, are not visible after application and polymerization and leave the wall vapor-permeable, this means that the surface continues to "breathe".

A water-repellent is **solvent-based** (only on dry surfaces) or **water-based** (on damp surfaces).

The efficiency, vapor permeability and durability over time are demonstrated in **BBRI reports** (Belgian Building and Research Institute), which show that our hydrofuges achieve the **highest score A**.

**The purpose of "hydrophobing"** is to make the facade water-repellent, prevent penetrating moisture, prevent frost damage, inhibit the growth of algae and fungi on the facade, improve insulation and protect against acid rain.

The water-repellents of Reynchemie protect the facade for **at least 15 years** (provided that correct application is carried out according to the technical data sheet).

## TEST REPORTS



### Capacity of the initial efficiency of the product

#### RC HYDROCREAM 3

*HYDROPHOBIC CREAM BASED ON OLIGOMERIC SILANE/SILOXANE*

*BBRI REPORT HD-340/133-120bis*

Efficacy after accelerated ageing (%) on brick	100 % Class A	Reduction of water vapor permeability (%)	0-10 % Class A
--	------------------	---	-------------------

#### RC HYDROCREAM 4

*HYDROPHOBIC CREAM BASED ON AN ALKYLALKOXY-SILANE*

*BBRI REPORT REN-0013 N*

Efficacy after accelerated ageing (%) on brick	100 % Class A	Reduction of water vapor permeability (%)	0-10 % Class A
--	------------------	---	-------------------

#### RC 224

*WATER-REPELLENT BASED ON OLIGOMERIC ALKYL POLY-SILOXANE*

*R.I.C.H. REPORT D : 2004.08263*

Efficacy after accelerated ageing (%) on brick	100 % Class A	Reduction of water vapor permeability (%)	0-10 % Class A
--	------------------	---	-------------------

#### RC 900

*WATER-REPELLENT BASED ON MONOMERIC SILANES*

*R.I.C.H. REPORT 2L13 93/5118*

Efficacy after accelerated ageing (%) on brick	100 % Class A	Reduction of water vapor permeability (%)	0-10 % Class A
--	------------------	---	-------------------

#### RC 805 ECO

*WATER-REPELLENT BASED ON OLIGOMERIC SILOXANES-FLUORINATED RESIN-POLYOLEFINS (5 POLYMERS)*

*K.I.K. RAPPORT D : 2004.08263*

Efficacy after accelerated ageing (%) on brick	100 % Class A	Reduction of water vapor permeability (%)	0-10 % Class A
--	------------------	---	-------------------





# WATER-REPELLENTS FOR FACADES

## In cream form

### RC Hydrocream 4

Highly concentrated hydrophobic cream (25% active matter) based on alkylalkoxysilanes and fluorocarbon resins for porous mineral substrates such as brick, natural stone, masonry, concrete ...

Advantages:

- **Does not affect bluestone and glass**
- Strong beading effect
- Easy application
- High penetration capacity
- Very UV-resistant



## Solvent-based

### RC 900

Colorless water-repellent (10% active matter) based on silanes and fluorocarbons to treat porous mineral substrates. RC 900 is UV- and alkali-resistant without changing the aspect of the support and while maintaining the vapor permeability.

**Does not affect bluestone and glass.**



### RC 224

Colorless water-repellent (10% active matter) based on siloxanes to treat porous mineral substrates. RC 224 is UV- and alkali-resistant without changing the aspect of the substrate and while maintaining the vapour permeability.

**Affects bluestone and glass.**

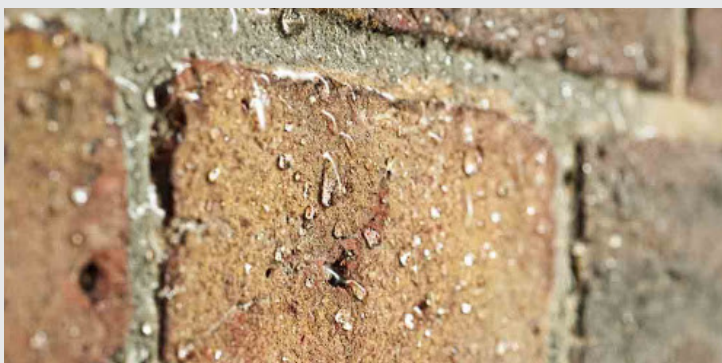


## Solvent-free

### RC 805 ECO

Solvent-free water-repellent (10% active matter) based on 5 polymers of the type silanes, oligomeric siloxanes, fluorinated resin and bridging resin based on polyolefins. Ready to use, for treating substrates such as concrete, masonry, natural stone or reconstituted natural stone.

**Affects bluestone and glass.**



### RC 806 ECO

Solvent-free impregnating agent suitable for both vertical and horizontal surfaces that makes porous building materials moisture and oil-repellent. Does not change the appearance of the support, does not form a film and allows the material to breathe. Slows down the formation of mosses and algae.

**Affects bluestone and glass.**





## Crack-bridging

### RC IP 500

Crack-bridging water-repellent for mineral substrates based on a polymerizing siloxane. In addition to providing a completely water-repellent and breathable layer, it also has filling and crack-bridging properties up to 500 microns. Gives a wet-look to the surface.



## Water/oil-repellent

### RC M060+

Protective impregnation for porous substrates against liquids and oils based on concentrated silanes and fluoropolymers that, when applied, form a transparent hydrophobic and oleophobic (oil repellent) impregnation without affecting the water vapor permeability.



# ANTI-GRAFFITI

## Semi-permanent system

### RC Wax

Semi-permanent water-repellent based on natural waxes for use on supports against graffiti, tags and other contaminations. Applicable on all surfaces. RC Wax can also be used on most common paint systems.

**Virtually invisible and environmentally friendly.**



## Permanent system

### RC 809 AG

Water-repellent intended for anti-graffiti, oil and water-repellent treatment of porous vertical substrates such as architectural concrete, aerated concrete, masonry, lime plaster, bluestone, natural stone, mineral plaster ...



# SURFACE HARDENER

## Stone reinforcer

### RC Stone Reinforcer

Stone reinforcer based on ethyl silica ester for natural stone, brick, concrete, pointing (75% active matter). Suitable for reinforcing weathered materials, in particular for powdering stones such as brick, sparse pointing, lime-bonded sandstone and concrete. Strengthens weak joints and makes the substrate dust-free.





# RISING MOISTURE





# INJECTION PRODUCTS

## Injection cream

### RC Drygel 80

80% concentrated cream based on silanes and siloxanes for an efficient treatment of walls against rising damp. Effective and easy to use.

RC DRYGEL 80 has been tested by the BBRI with report number DE 622X910/EXT and obtains a "**highly efficient product**" score.



## Solvent-free

### RC 300 W

Solvent-free, liquid injection water-repellent with high penetration capacity. After injection, the active substances form a hydrophobic polysiloxane in the pores that stops capillary absorption and rise of moisture in a very efficient and definitive way.

RC 300 W has been tested by the BBRI with report number DE 622X646-07 and achieves a "**highly efficient product**" score.



## Solvent-based

### RC 310 ECO

Solvent-based injection water-repellent based on oligomeric siloxanes and organometals. It stops rising damp, even with a high concentration of rising damp in the masonry.

RC 310 ECO has been tested by the BBRI with report number DE 622X943-09 and achieves a "**highly efficient product**" score.



# SALT-BLOCKING

## Sulphates

### RC Sulfastop ZB

RC Sulfastop ZB chemically transforms hygroscopic salts such as sulphates into very difficult dissolvable compounds. The salts can no longer migrate to the surface and can thus not longer attack the wall and the covering.



## Nitrates

### RC Nitrablock

RC Nitrablock forms a barrier against nitrates and chlorides deep in the support which interrupts and/or greatly reduces salt transport.





# **BASEMENT SEALING**





# MORTARS

## Salt-buffering sub-render

### RC Sanisel

Salt-buffering sub-render formulated from natural hydraulic lime for plastering interior and exterior walls affected by salts and moisture.



## Elastic mortar

### RC 180

Elastic 2-component mortar for waterproofing and protecting works. Forms an elastic impenetrable film **even under negative pressure of 8 Bar.**



## Hydraulic waterproof mortars

### RC 221

Waterproofing mortar intended for embedded masonry such as basements, swimming pools ... RC 221 IS Applied with a smoothing trowel or a spraying machine.

**Layer thickness of 10 to 20 mm.**



### RC 222

Waterproof mortar based on special cement, mineral fillers and admixtures. Apply crosswise with a block brush in 2 layers.

**Layer thickness of 1,5 mm per layer.**



# WATERSTOP

## Fast setting cement

### RC Plug

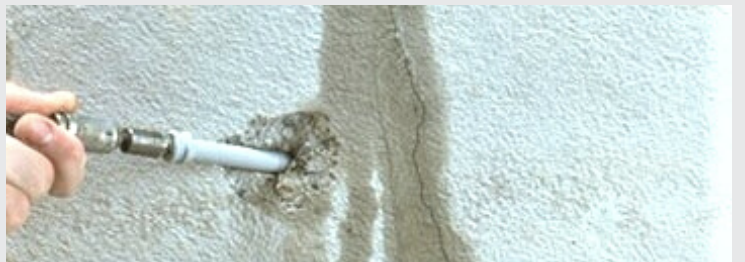
Very fast setting cement for stopping water leaks immediately.



## Injection foam

### RC PU-Inject

Semi-flexible injection foam, ideally suited for stopping water leaks (tears/cracks) in concrete or brick structures.



## Sealing paste

### RC Stopaq

Sealing paste for penetrations of pipes, cables and tubes in wall penetrations against the penetration of gases and running water.

Quick and easy to use and is permanently flexible.





# WOOD RESTORATION

A photograph of a wooden roof structure, likely inside a barn or a rustic building. The image shows a complex network of wooden beams and rafters. A single light bulb is hanging from one of the beams, providing illumination. The wood appears aged and weathered, with some areas showing signs of decay or damage. The overall tone is warm and rustic.



# WOOD RESTORATION

## Epoxy for reparation

### RC Poly-wood-epoxy

Epoxy casting mortar for structural repair or replacement of damaged parts in wood structures. Wood severely affected by mold or wood beetles regains its original supporting function.



## Fibreglass rods

Fiberglass rebars for construction and renovation. They are completely inert, non-corrosive, non-conductive and weigh only one-fourth as much as a steel rod. Available in a variety of diameters.



## Filler

### RC Wood Filler

Epoxy putty consisting of two components for structural and decorative repairs of wooden statues, sculptures, wooden beams, window frames ...



## Wood protection cream

### RC Wood Cream

Extremely suitable for the protection and refinement of exterior wood. The transparent and colorless exterior stain in cream form serves to protect semi-stable wood which does not come into contact with the ground. The cream protects the exterior wood against, among other things, wood rot and blue stains.





# STONE RESTORATION





# REPAIR MORTARS

## Mineral mortar

### RC Amonit

Mineral mortar for the repair of natural stone, consisting of ground natural stone (powder) and a mineral binder (liquid). Available in different types in terms of hardness, color and grain structure of the stone type.



## Hydraulic mortar

### RC Amostone

Mineral repair mortar based on natural hydraulic lime for restoring brick, natural stone and architectural ornaments.



# DECORATIVE MICRO MORTAR

### RC Nautil Mono

Decorative micro mortar based on natural hydraulic lime available in beige or colored in the mass. It can be used for refurbishment or restoration works and for repair works of facing stones and architectural decoration. It gives the substrate the appearance and texture of natural stone and can be applied both indoors and outdoors.



# POINTING MORTAR

### RC Astivo

Coloured lime mortar based on pure natural hydraulic lime NHL 3.5. For each 10 kg bag of RC Astivo, 40 kg of grouting sand (Rhine or dune sand) should be added.

Available in 11 basic colors.





# CONCRETE REPAIR





# 2-COMPONENT MORTARS

## Horizontal application

### RC EM 107

Epoxy mortar for horizontal repair work of concrete floors for high mechanical loads. Particularly suitable for repairing old and damaged floors as well as for the installation of new floors.



## Vertical repairs

### RC TM

3-component thixotropic repair mortar based on epoxy resins for vertical work, fills, cracks in concrete beams and walls, patching pillars, vaults ...



## Casting mortar

### RC MG

2-component epoxy casting mortar based on epoxy resins for filling casting moulds in concrete and horizontal cavities of all kinds, anchoring bolts, machine supports, tracks ...



## Roadworks

### RC 712

Hydraulic micro concrete mortar for quick repairs of elements in road construction. Compressive strength after 24 hours of 50 MPa and after 28 days of 70 MPa. Layer thickness per application: 1,5 to 20 cm.



## MMA-mortar

### RC Blitsmortel

2-component repair mortar based on methacrylate (mma) for horizontal repair work of concrete floors for high mechanical loads. Load-bearing after 90 min. Processing temperature up to -25°C.



## Fiber-reinforced mortar

### RC 730 Betonrep

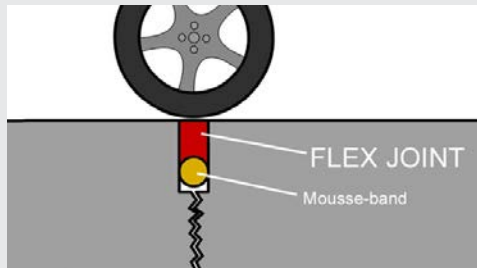
Fiber-reinforced, shrink-compensated concrete repair mortar. For repair thicknesses of 20 to 100 mm per layer. Class R3.



## Joint filler

### RC Flex Joint

3-component pourable and flexible joint filler for filling up seams and cuts in floors. RC Flexjoint gives a hard but flexible joint with an elongation of 25%, this to prevent crumbling of the saw cuts.



## Micro filler mortar

### RC 854

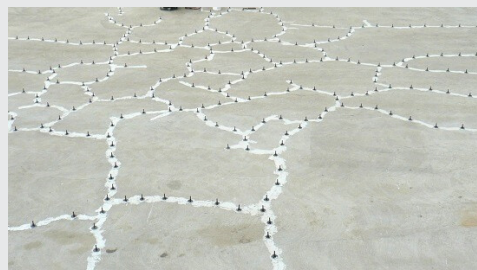
Fine 2-component microfiller mortar for smoothing and filling concrete, mortar and stone surfaces.



## Injection resin

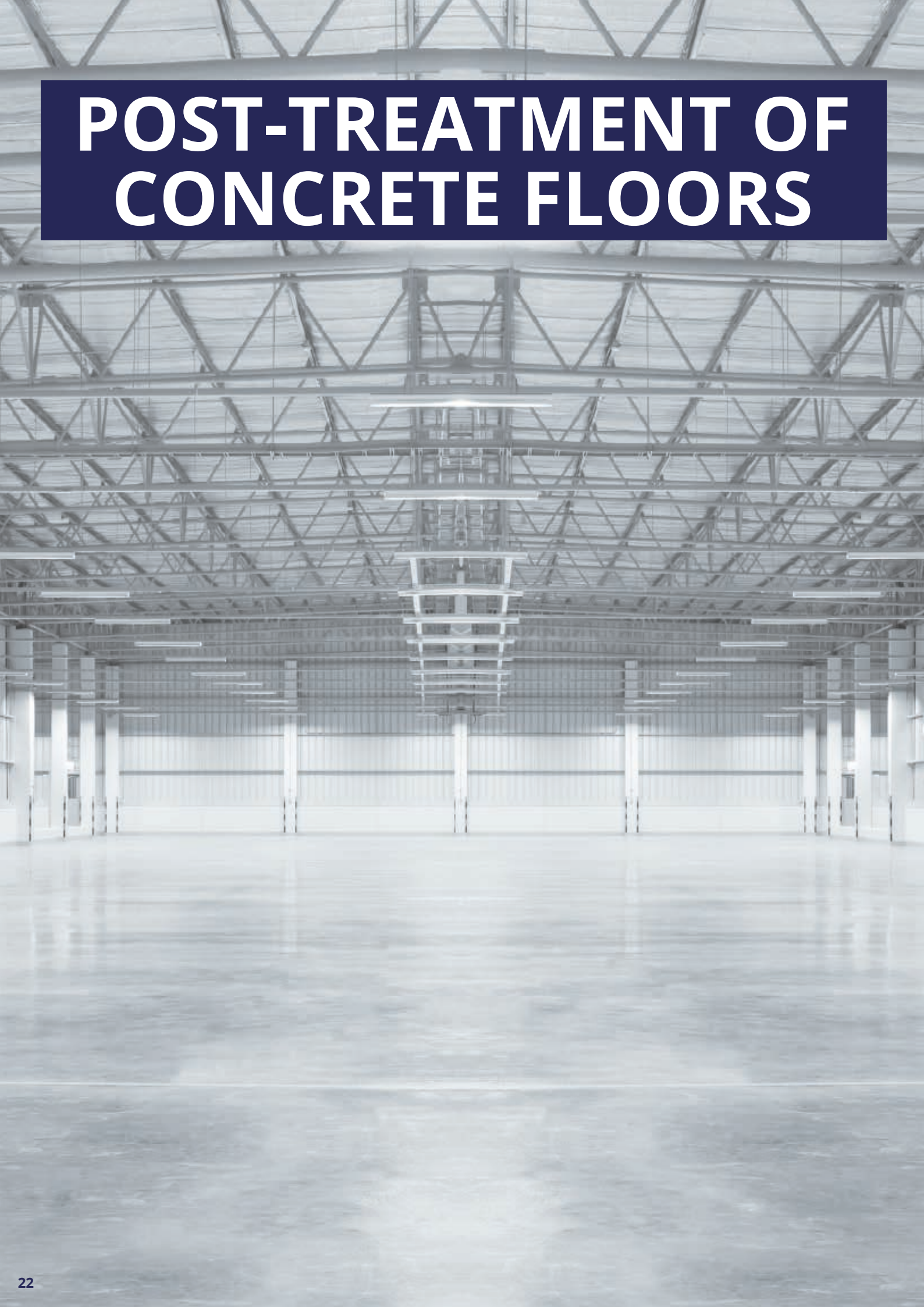
### RC Inject

Thin liquid epoxy resin for structural repair of cracks in concrete and wood structures.





# POST-TREATMENT OF CONCRETE FLOORS





# POST-TREATMENT OF CONCRETE FLOORS

## Sodium silicate hardener

### RC M040

Solvent-free sodium silicate for hardening old and new concrete surfaces. The concrete undergoes a unique change. Because of the chemical process, the top layer becomes up to 30% harder, denser, dust-free and easier to maintain.



## Lithium silicate hardener

### RC M050-LIT

Solventless lithium silicate for hardening polished concrete surfaces. Can be used both indoors and outdoors. Prevents dust formation and improves the appearance of concrete floors.



## Impregnation

### RC M060+

Protection concrete floors against water and oil based on concentrated silanes and fluoropolymers. Can be applied both indoors and outdoors and does not change the appearance of concrete and terrazzo.



## Solvent-based curing compound

### RC 111

Crystal clear curing compound for fresh concrete. Forms a vapor-tight membrane at the surface and protects against drying out and cracking. Very suitable for industrial floors, road concrete, freeways, canals, floor slabs, parkings, mortar screeds ...



## Solvent-based curing compound

### RC 114

Solvent-free wax-based curing compound for fresh concrete surfaces. The product is ready to use for both indoor and outdoor use and solvent-free, so there is no burden on the environment and the user.



## Surface retarder

### RC Concrete Wash-Out

Solvent-free surface retarder in water emulsion for washing out concrete surfaces in different depths, from fine washed out to coarse washed out concrete. Specially developed for so-called design concrete.

Standard types:

- **25:** approx. 2 mm wash-out depth
- **50:** approx. 2,5 mm wash-out depth
- **70:** approx. 3 mm wash-out depth

Other types on request.





# PAINTS & PLASTERS





# PAINTS

## Lime render

### RC Kalei / RC Kalei F

100% cement-free lime mortar based on natural hydraulic lime (NHL 3.5) . Available in 29 different colors and in a coarse grain (RC Kalei) and fine grain (RC Kalei F).

#### Benefits:

- **Does not contain cement**, ash and other pozzolanic additives
- Very good elasticity
- Excellent vapor permeability
- No shrinkage cracks
- Moisture-regulating effect
- Approaches best the original and traditional lime renders

**RICH report: DI : 2013.11921** (water vapor permeability)

**SETEC report 12.29121.007.01** (100% cement-free)



## Siloxane paint

### RC Siloxcoat R

Vapor-open and dirt-repellent facade paint based on siloxane resin. Suitable for use on new facades or renovation of old facades. Often used as a finishing coat on RC Kalei.



## Lime paint

### RC Calco

"Historic" lime paint that is ready to use, for applying finishes in the authentic way. RC Calco possesses excellent properties against mold and bacteria.



## Silicate paint

### RC Silica Paint

Matt facade paint based on silicate and organic stabilizers. This facade paint is water-repellent but allows the substrate to breathe perfectly.



## Roof paint

### RC Dak-acryl

High quality water-based roof renovation paint based on 100% acrylate with excellent adhesion and provides optimal protection against weather, moss and algae growth and acid rain.





# PLASTERS

## Ground plaster

### RC Intralime G

Light gray ground plaster for interior work based on lime and anhydrite. The high lime content gives the plaster a high flexibility and allows optimal and easy application. Due to its unique composition, good water vapor permeability is assured.

Can be applied to all dry and absorbent substrates, including ceilings and insulating masonry consisting of materials such as aerated concrete, concrete blocks, expanded polystyrene or similar.

Layer thickness: 0.7 - 8.0 cm

Consumption: 11 kg/m<sup>2</sup>/cm

In accordance with EN 13279-1.



## Finishing plaster

### RC Intralime F

Fine finishing plaster to level all irregularities with two or more layers and to obtain a smooth finish for further decoration afterwards. Ideal to level and smooth RC INTRALIME G.

Suitable for plastering directly onto plasterboard, blocks, slabs or aerated concrete panels. Should never be applied to external, unstable and inconsistent substrates or substrates treated with release agents or water repellents.

Layer thickness: 1 - 4 mm

Consumption: 1 kg/m<sup>2</sup>/mm

In accordance with standard EN 13279-1.



## Lime filler

### RC Calcoliss 300

Ready-to-use lime paste based on aerated lime. Exceptionally white with a very fine structure, as a thin levelling mortar for levelling and preparing the substrate.

It is a lime paste that conforms to standard EN-459 and is used both indoors and outdoors to level the substrate. This produces a flat, evenly absorbent substrate that is ready to paint and therefore ready for further finishing with lime or silicate paints, among others.

Layer thickness: maximum 1 mm

Consumption: 400 - 500 g/m<sup>2</sup>





# FLOOR SYSTEMS





# FLOOR SYSTEMS

## 2-component epoxy coating

### RC 660

Epoxy coating with excellent adhesion and mechanical properties and can be applied to concrete, mortar, fiber cement, brick ...

Available in RAL-colors on request.



## Polyurethane hardtop

### RC Hardtop 403 W

Hardtop based on polyurethane for epoxy and polyurethane synthetic resin floors with very high scratch and UV resistance.

Available as transparent and colored.



## 3-component epoxy casting mortar (3 mm)

### RC SL

3-component epoxy casting mortar with excellent self-flowing properties.

Available in RAL-colors on request.



## 2-component leveling coating (1-2 mm)

### RC FL-Floor

High quality 2-component self-leveling coating. Excellent for renewing existing epoxy systems.

Available in RAL-colors on request.



## 2-component epoxy primer

### RC 845

2-component epoxy primer for all Reynchemie epoxy and polyurethane systems and as a binder for scraper coatings.



## Etching agent for concrete

### RC Acem

Phosphoric acid-based etching fluid to etch concrete floors so that the coating or primer can adhere perfectly to the substrate.





# VARIOUS PRODUCTS





# STRIPPERS

## Paints

### RC Decap 1

Powerful and fast-acting paint stripper, free of methylene chloride for paints, varnishes and glue residues.

It is a paint stripper which is particularly suitable for removing facade paints, varnishes, paints and glue residues on concrete, wood and mineral substrates.

Adheres excellently to vertical and horizontal surfaces and is very washable with water.



## Exterior paints

### RC Decap Strip

Alkaline stripper for removing up to 30 coats of paint, lead-based paints included.

Contains no methylene chloride or solvents, is non-toxic, non-flammable and does not produce any released fumes.

Can be applied to a variety of substrates including wood, plaster, gypsum, metal, brick, stone, limestone, concrete and marble.



## Glue

### RC Glue Remover

Powerful stripper for all types of glue, ink and rubber marks on brick, wood, natural stone, concrete, metal and glass.

Solvent-based, free of bases and acids and has an excellent depth effect.

Due to its special composition and high viscosity, it can also be used on vertical surfaces.



## Concrete

### RC Betostrip

Fast and effective stripper for efficiently removing curing compound, rubber tire marks, etc. from floors, patios, driveways and other concrete pavements.

Easy to apply, contains a citrus fragrance and does not produce hazardous chemical solvent fumes.





# CONSTRUCTION SPECIALTIES

## Chemical anchor

### RC 390 Blue

Chemical anchor based on a styrene-free vinyl ester for fixing and mounting threaded rods, rebar ... in masonry, concrete or aerated concrete. RC 390 Blue is unique in its composition: **the resin changes color when cured.**

Available in 300 ml and 420 ml.  
CE number: 1404-CPR-3385



## Cement and concrete improvers

### RC 8 Mortarfat

Air bubble former for masonry mortar that introduces a large number of very small, stable air bubbles into the mortar mortar, improving workability and reducing the frost sensitivity of the hardened mortar.



### RC Acryplast

Concentrated liquid aggregate developed as a bonding agent for cementitious products. Also as an adjuvant to make mortars watertight, to improve processing and to obtain higher elongation, tensile and bond strength.

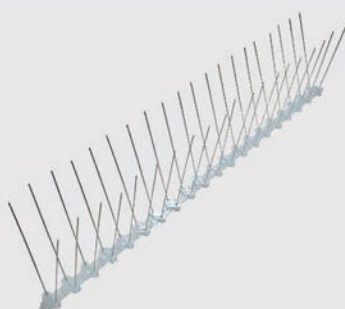
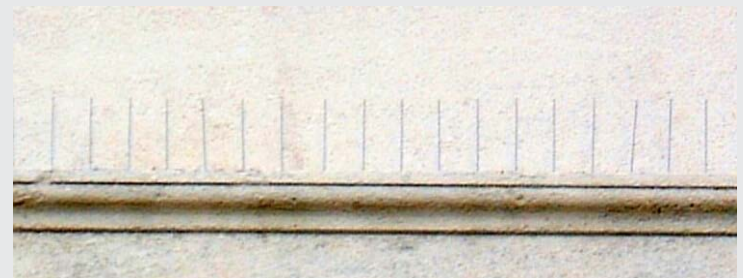


## Pigeon protection

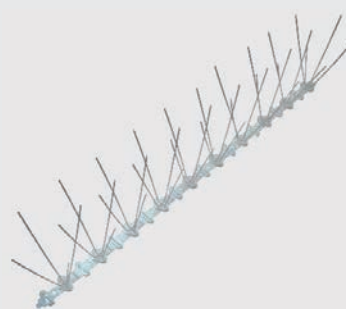
### RC Birdstop

Pigeon protection for facade decorations, cornices, window sills, monuments, statues, gutters, billboards, blinds, urban homes and all surfaces that may provide suitable nesting or breeding habitat for birds.

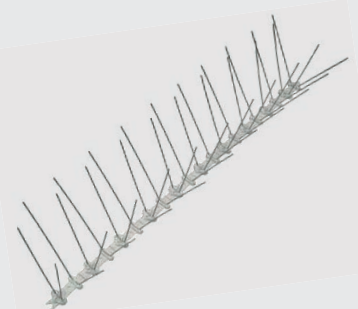
**Stainless steel type 302.** Available with 2, 3 and 4 pins.



BS02 (2 pins)



BS03 (3 pins)



BS04 (4 pins)



# CONSTRUCTION SPECIALTIES

## Release agent

### RC Univers

Universal release agent for concrete. RC Univers is applied where a smooth and even concrete is of great importance (smooth vaults, architectural concrete ...).



## Polyvalent thinner

### RC Thinner

Polyvalent thinner with high dissolving power for thinning and dissolving epoxy and polyurethane products. Also used for cleaning material.



## Pumps and accessories

### RC 390 Blue

Electric pistol RC 420 (art.nr. 130409)



Manual pistol (art.nr. 130401)



Blow pump (art.nr. 131100)



Mixing nozzle (art.nr. 130901)



Sleeve (art.nr. 130501)



### RC Drygel 80

Elektric pistol RC 600 (art.nr. 210139)



Manual pistol (art.nr. 210132)



Coupling + nozzle (art.nr. 210131)



### RC PU-Inject

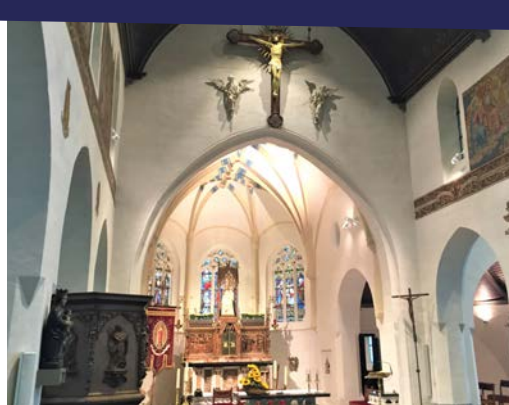
Manual injection pump (art.nr. 121117)



Injection nipple (art.nr. 121001)







 Industrieweg 25, B-8800 Roeselare  
 Tel. +32-51-24.25.27  
 reynchemie@reynchemie.com  
 www.reynchemie.com

Vind ons op






Uw partner in restauratie  
 en renovatie  
 Votre partenaire en  
 restauration et rénovation  
 Your partner in restoration  
 and renovation



REYNCHÉMIE NV/SA